

Lodging

Eat - Play & Stay in Custer County

Bed & Breakfast - Inns

Courtyard Country Inn Bed & Breakfast • (719) 783-9616
410 Main Street • Westcliffe, CO 81252

Main Street Inn B & B • (719) 783-4000 • 1-877-783-4006
501 Main Street • Westcliffe, CO 81252

E-mail: mstreetbb@aol.com • www.MainStreetBnB.com
Renovated 1890's Victorian in Historic Westcliffe. 5 bedrooms, 5 bathrooms. At this time, discounts given in lieu of breakfast. Beverages provided.

• **Satellite TV** • **Wi-Fi** • **Handicap Access**

The Lamp Post Lodge • (719) 783-2876 • (719) 371-6023 cell
59450 Hwy 69 • Westcliffe, CO 81252

www.lamppostlodge.com

Open Year Round.

• **Breakfast** • **Satellite TV** • **Wi-Fi** • **Handicap Access**

Motels

Antler Motel, Liquor Store & General Store • (719) 783-2426
P.O. Box 82 • 102 S. 6th Street • Westcliffe, CO 81252

E-mail: antleronline@gmail.com

<http://antleronline.googlepages.com>

Antler General Store, Liquor Store & Motel is your one stop for every need while you're in Custer County.

• **Satellite TV**

Golden Corner Suites • (719) 783-9363

110 S. 2nd Street • Westcliffe, CO 81252

E-mail: goldencorner@ris.net

• **Kitchen/Micro/Frig** • **Satellite TV** • **Wi-Fi**

LODGING

Westcliffe Inn • (719) 783-9275 • (800) 284-0850

P.O. Box 390 • 57975 S. Hwy 69 • Westcliffe, CO 81252

www.westcliffeinn.com

Check out our website for our SEASONAL SPECIALS and online booking. 28 spacious, modern, ground-level units. OPEN YEAR ROUND.

• **39" Flat Screen TVs** • **DirecTV** • **Hot Tub/Sauna** • **Continental Breakfast**
• **Micro/Frig** • **FREE Wi-Fi** • **Handicap Access** • **Pets in Designated Rooms**



www.iusedtobeamilkjug.com
www.sangrehomedecor.com
www.ilovedinnerware.com
www.reflectionsgallery2.com

719.783.0479
877.368.5709

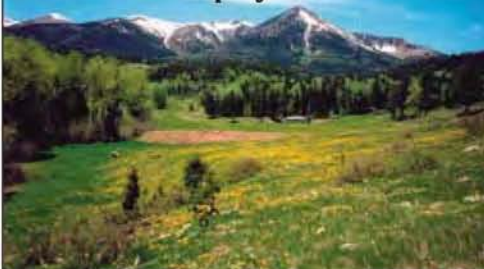
Sangre Home Decor

YOUR HOME DECOR CENTER
Art • Photography • Gifts • Jewelry
• Books/Cards • Lamps • Framing
• Wind chimes • Pottery • Interior Decor
• Furniture • Poly Furniture • Area Rugs

202 Main Street • Westcliffe, CO 81252

Breezesta
Recycled Poly Furniture
MADE IN USA

If You Dream of Living In The Mountains . . .
Watson Land Company Will Put You There



Elizabeth Watson
Carolyn Abraham
Lucy Wilcox

(719) 783-2803
www.watsonland.com
info@watsonland.com



Invest in your lifestyle

Watson Land Company - Featuring unique land, ranch and recreational properties and fine homes in the Rocky Mountains of Southern Colorado.

Lodging

We hope you enjoy your stay!

Campground/RV Parks

Alvarado Campground • (719) 269-8500

Along the Rainbow Trail - under the Forestry Service

Aspen Acres Campground • (719) 485-3275

6561 Hwy. 85 • Rye, CO 81069

Cross D Bar Trout Ranch • (719) 783-2007 • (800) 453-4379

2299 County Road 328 • Westcliffe, CO 81252

dickm29@mho.com • www.cross-d-bar-troutranch.com

High-mountain cattle ranch, four spring-fed lakes, awesome fishing, spectacular scenery, cabins, tepee, RV park, guest house, hiking, mountain biking, rafting and horseback riding.

•Kitchen/Micro/Frig •Satellite TV •Wi-Fi •Handicap Access •Pets OK
•Laundry on Site •RV Sites

Eberling Mobile Home & RV Park • (719) 783-9778

P.O. Box 204 • 957 French Street • Silver Cliff, CO 81252

Grape Creek RV, Campground & Cabins

(719) 783-9779 • 1-888-783-2267

56491 Highway 69 • Westcliffe, CO 81252

Valley View Park Home Community

(719) 783-9321 • (888) 783-0002

Facility: 325 Main Street • Silver Cliff, CO 81252

Wet Mountain RV Park & Cabins

(719) 371-1389 • (719) 371-0918

P.O. Box 1487 • 816 Main Street • Westcliffe, CO 81252

Vacation Ranches/Cabins

Alpine Lodge • (719) 783-2660

6848 County Road 140 • Westcliffe, CO 81252

E-mail: kastendieck1@aol.com

Open year round. Cabins, Restaurant, Lounge, Catering, Special Events held in a historic venue.

•Restaurant/Dining Room •Handicap Access •Pets OK

D.P. Property Management & Real Estate

(719) 783-2415

P.O. Box 578 • 104 Main St. • Westcliffe, CO 81252

Hidden Pines Cabins at San Isabel

(719) 948-2786 • (719) 485-3565 • Rye, Colorado 81069

Ken's Rents, LLC • (719) 783-9009 • (800) 238-3542

103 S. 3rd Street • Westcliffe, CO 81252

Lodge at San Isabel, General Store & Restaurant

(719) 489-2280 • 59 County Road 371 • Rye, CO 81069

Red Rock Ranch Retreats • (303) 717-5445

525 County Road 260 • Westcliffe, CO 81252

The Pine Lodge • (719) 489-2686 • (719) 489-3686 Fax

P.O. Box 596 • San Isabel, CO 81069

Dude Ranches

Bear Basin Packtrips at Bear Basin Ranch

Summer: (719) 783-2519 • Winter: (719) 510-1766

Fax: (866) 244-4691

473 County Road 271 • Westcliffe, CO 81252

www.bearbasinpacktrips.com

We offer a variety of riding excursions for all ages and abilities: 2 hour rides, day rides, weekend getaways, 3 & 5 day pack trips.

Music Meadows Ranch • (719) 783-2222

6076 CR 119 • Westcliffe, CO 81252

Apartments

Aspen Woods Apartments, LLC • (719) 783-3580

P.O. Box 815 • 702 Main Street • Silver Cliff, CO 81252

Mountain View Apartments • (719) 371-3509 • (719) 371-8771

Silver Cliff, CO 81252

Vista Celesta Apartments • (719) 269-8608

109 S Adams Blvd, Westcliffe, CO 81252

Conference Centers/Retreats

Hermit Basin Conference Center • (719) 783-2900

1699 Camino • Westcliffe, CO 81252

Horn Creek Conference Center,

Christian Retreats & Family Camps • (719) 783-2205

6758 County Road 130 • Westcliffe, CO 81252

Operation Uplift • (719) 783-9414

4500 County Road 260 • Westcliffe, CO 81252

Rainbow Trail Lutheran Camp • (719) 942-4220

(Located in Custer County)

P.O. Box 3056, CR 198 • Hillside, CO 81232

Lodging

*Plan your next
outing in Custer County.
Your backyard to fun!*

Homes & Cabins

All-Year Vacation Rental • (719) 429-5152
12 Ben Eaton Lane • Westcliffe, CO 81252

Alvarado Cabin • (303) 346-0320 • Cell (720) 206-5232
Westcliffe, CO 81252

Bar-M Log Home Vacation Rental • 763-557-1383
Cuerno Verde Ranch, Westcliffe 81252

Buckboard Ranch • (719) 783-2133
3050 County Road 137 • Westcliffe, CO 81252

Dorito Verde • (316) 640-9393
100 Beech Blvd. • Westcliffe, CO 81252

Eagles Nest • (817) 455-7176
1115 County Road 319 • Westcliffe, CO 81252

Hidden Elk • (719) 371-2644
(McKinzie Junction Area) • Westcliffe, CO 81252

Knotty Pine Cabin • (719) 783-2487
102 Greenleaf Lane • Westcliffe, CO 81252

Mountain View Vacation Rental • (303) 478-6652
308 Main St. • Westcliffe, CO 81252

Our Rosita Retreat • (719) 783-0210
P.O. Box 923 • Westcliffe, CO 81252

Phantom Horse Ranch • (719) 371-7637
P.O. Box 663 • Westcliffe, CO 81252

Rosita Rentals • (719) 783-0941
6780 County Rd 328 • Westcliffe, CO 81252
E-mail: cabins@rositarentals.com • www.rositarentals.com
*Kitchen/Micro/Frig *Satellite TV *Pets (Negot.) *Laundry on Site

Seiden • (719) 783-4505
4500 County Rd. 260 • Westcliffe, CO 81252

Shining Mountain Rentals • (719) 783-2627
P.O. Box 926 • Westcliffe, CO 81252

Spa Sola Fide • 1-877-783-4270
38 Ben Eaton Lane Rosita Hills • Westcliffe, CO 81252

The Amsbury Bunkhouse • (719) 371-2644
On the Valley Floor • Westcliffe, CO 81252

"The Hideaway" Rustic Aspen House • (719) 783-9180
Located east of the Valley Floor in the Wet Mountains
Westcliffe, CO 81252

The Ponderosa Pines Cabin • (719) 783-3533
153 County Road 182G • Westcliffe, CO 81252

The W Ranch • (719) 331-0292 • Westcliffe, CO 81252

Venable Cabin • (413) 528-9285 • (719) 783-2415
Westcliffe, CO 81252

Westcliffe Adobe Villa • (408) 927-7864
Westcliffe, CO 81252

Westcliffe Mountain Home • (719) 783-2415 • (403) 754-3385
Westcliffe, CO 81252



B & D Automotive

"Experience Eliminates Experiments"
Factory Trained and Certified Technicians

(719) 783-4222



•AC & Heating •Brakes
•Automotive Repairs •Tires

Over 60 plus years combined experience!

601 Main St. • Silver Cliff, Colorado



Historic Alpine Lodge

(719) 783-2660
Wednesday - Sunday
5 - 10 pm
Steaks, Seafood, Chicken and Pasta

Sunday Brunch
11 - 2
Breakfast Entrees, Full Salad Bar
Alpine Fried Chicken & Much More!

Open Year
Round

- Restaurant
- Lounge
- Catering
- Special Events
- Cabins

Reservations requested
and appreciated